

Eco Code

Our school
caring for
our Planet





P- Promote planting and caring for our Grow Zone and school gardens

We want to continue our Grow Zone and have renewed focus on planting in our school gardens.

Where is our Grow Zone?

Why do we want to do this?



R-Reduce waste through recycling and reusing wherever possible

We want to recycle and reuse as much as possible.

What do we already do at school to support this?



0- Observe and protect Bio-Diversity through regular Forest School experiences

What have we done this year in Forest School to promote bio-diversity?



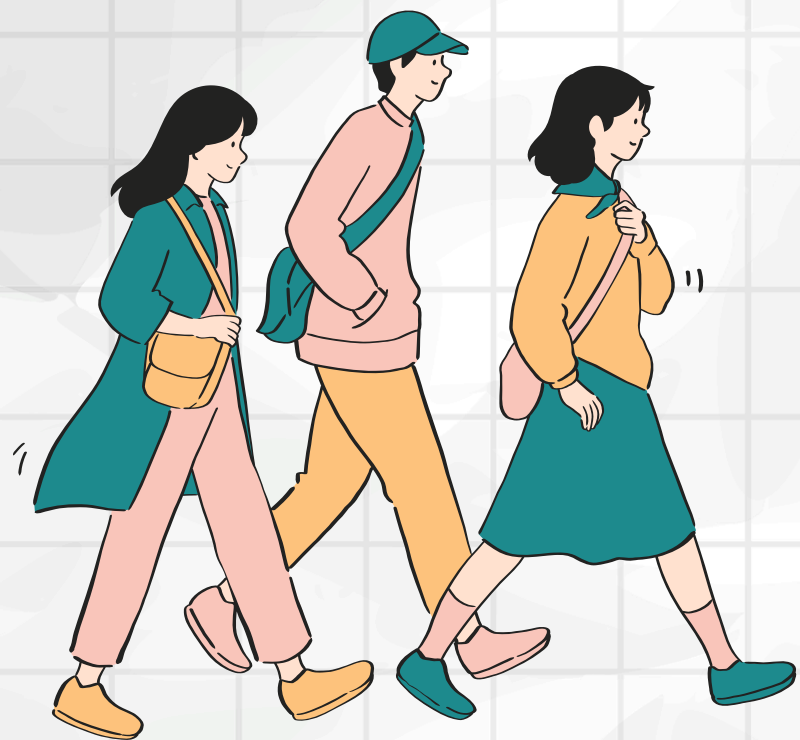
T- Travel sustainably by celebrating Walk to School Week and completing Bikeability each year

Why is it important that this is part of our Eco-Code?



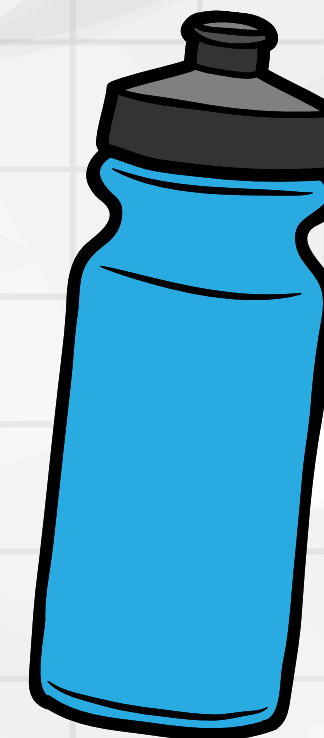
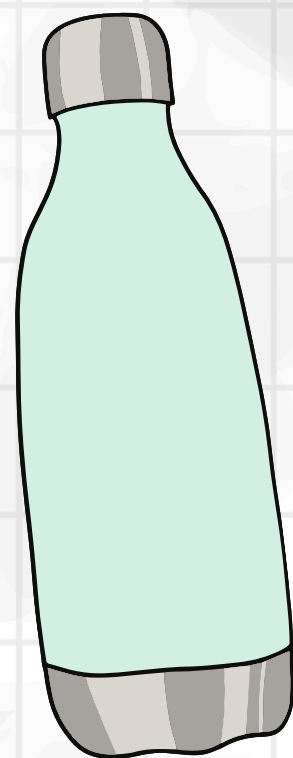
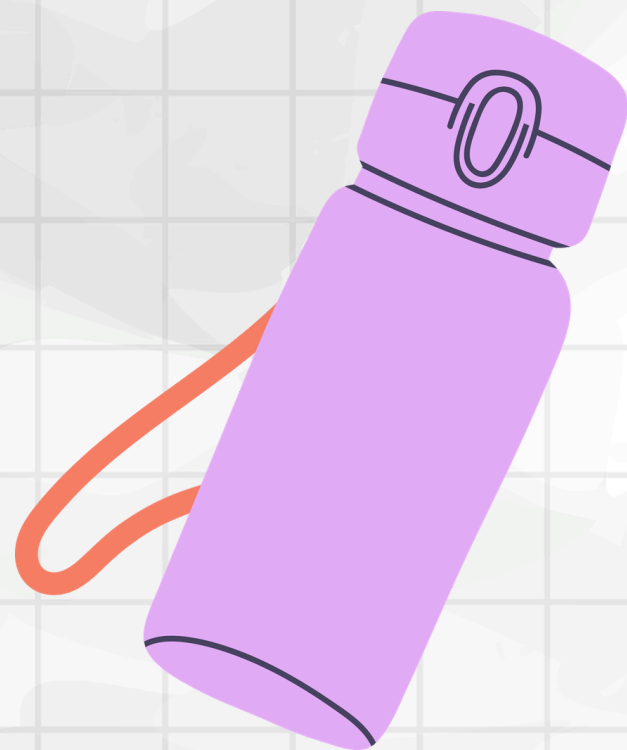
T- Travel sustainably by celebrating Walk to School Week and completing Bikeability each year

Why is it important that this is part of our Eco-Code?



E- Encourage reusable water bottles


Why is it important that this is part of our Eco-Code?



C-Commit to using reusable plastics wherever possible in the school kitchen

Why is it important that this is part of our Eco-Code?

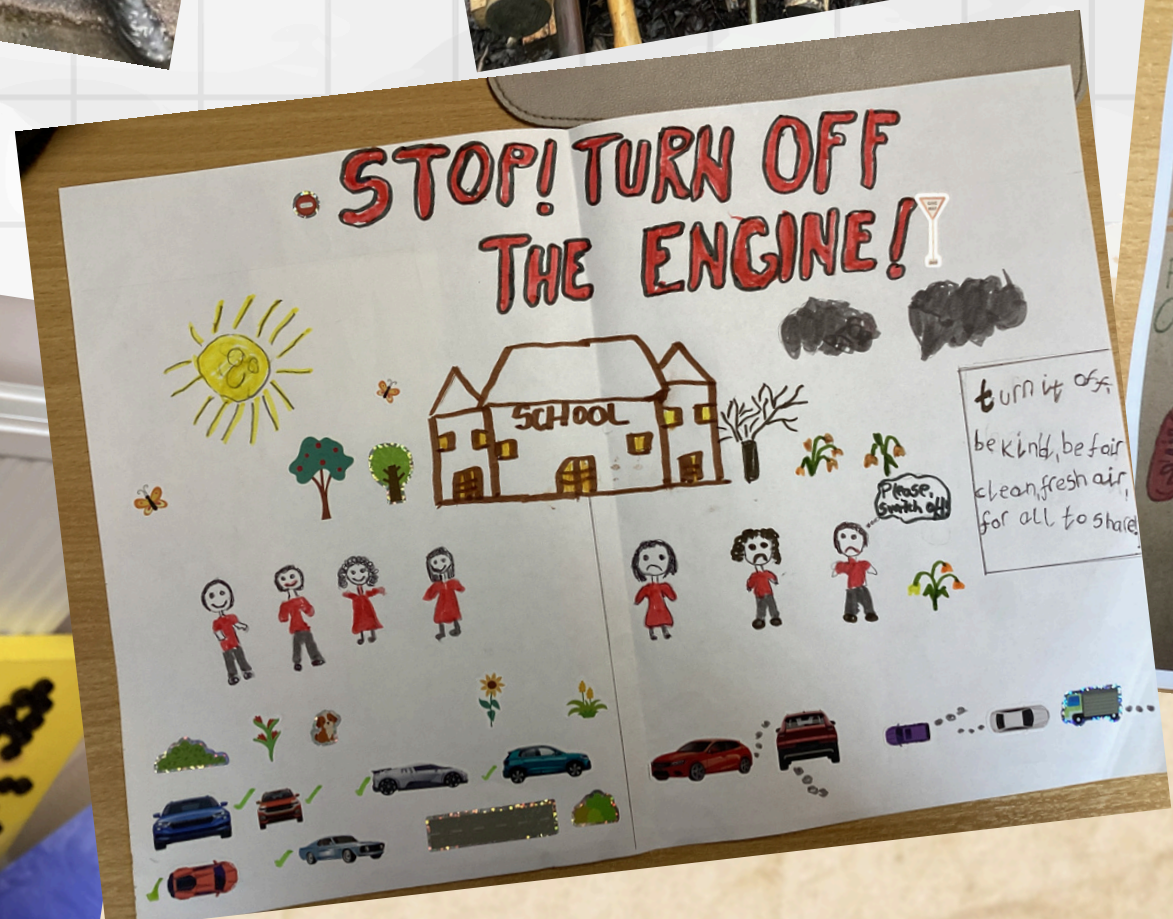




T-Together we make choices that protect our planet every day

What choices can you make?







CRESTWOOD PARK'S ECO-CODE



At Crestwood Park, we commit to the following to care for our environment:

P

Promote planting and caring for our Grow Zone and school gardens.

R

Reduce waste through recycling and reusing wherever possible.

O

Observe and protect biodiversity through regular Forest School experiences.

T

Travel sustainably by celebrating Walk to School Week and completing Bikeability each year.

E

Encourage reusable water bottles to reduce single-use plastics.

C

Commit to using reusable plastics wherever possible in the school kitchen.

T

Together we make choices that protect our planet every day.



Thank you!!

